

RANGE 11

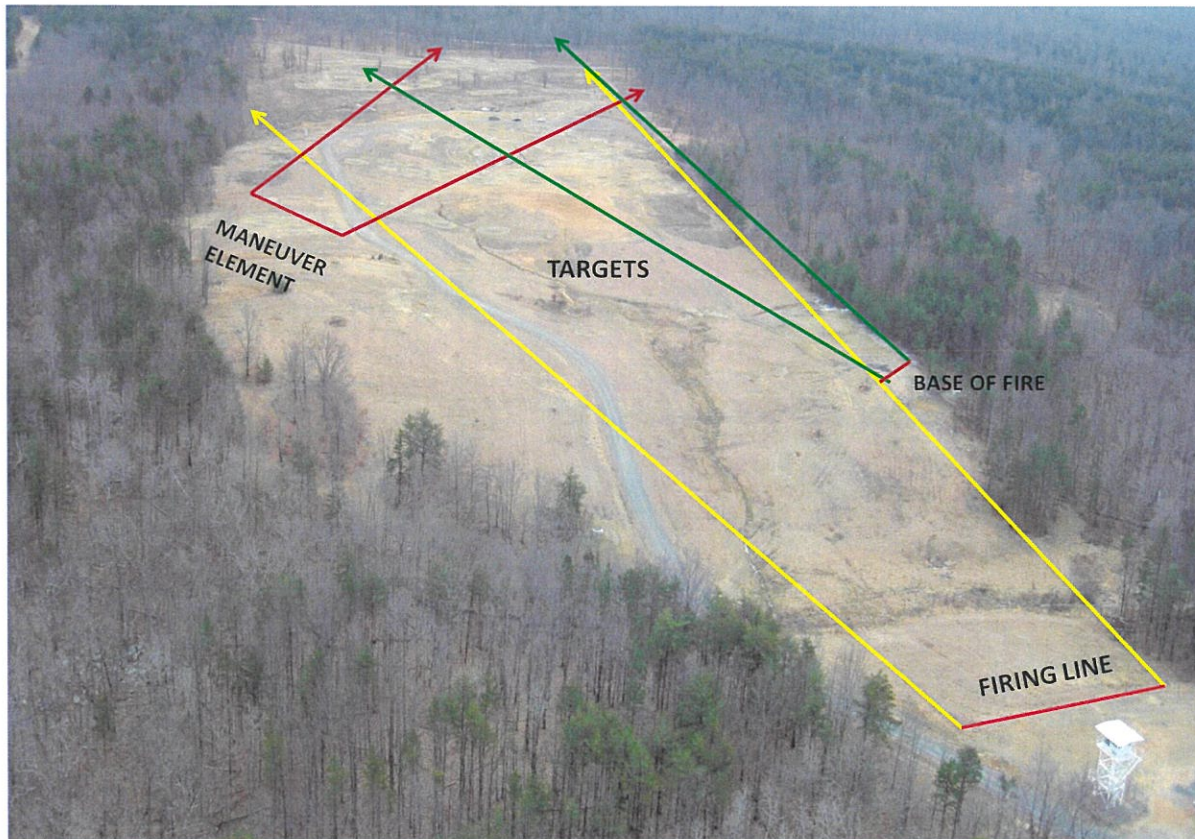
SOP

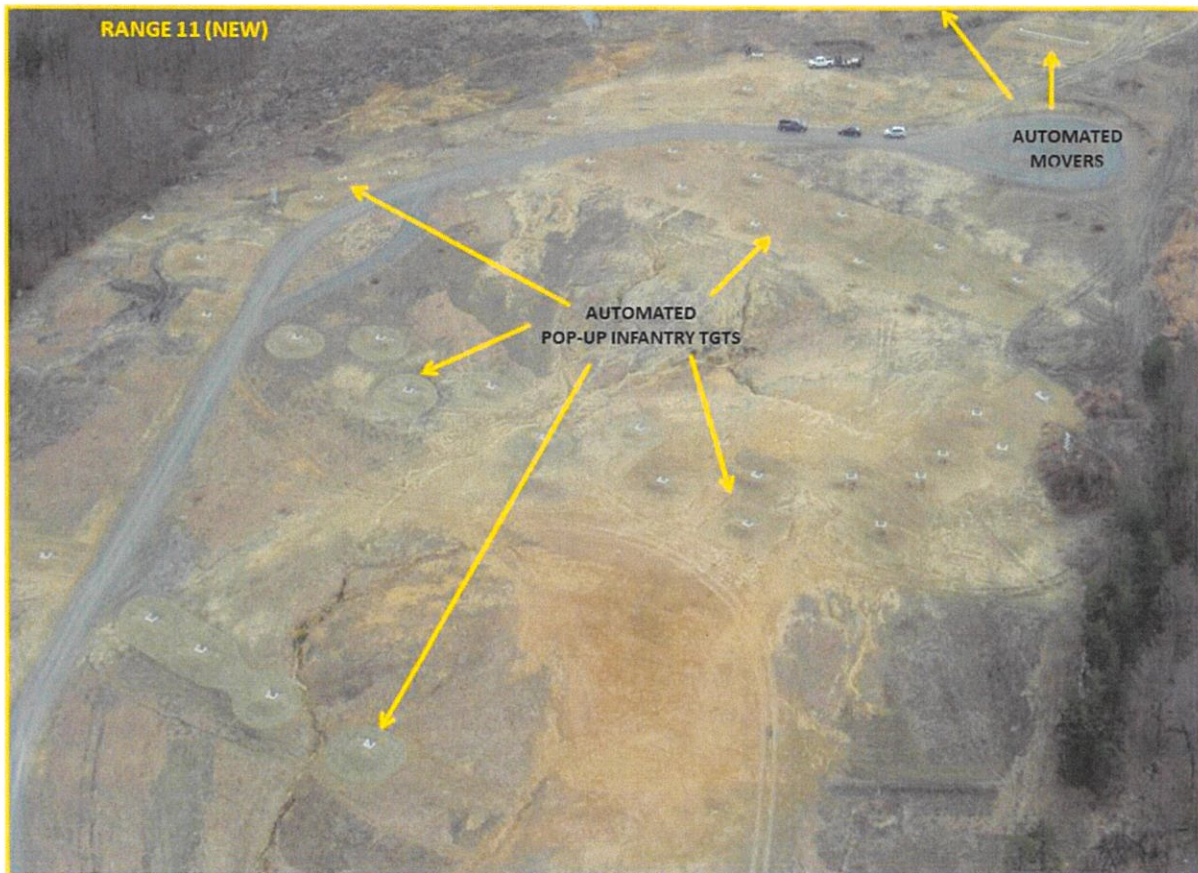
DESCRIPTION: Range 11 is a small arms unknown distance and fire and maneuver range located at 79607280. The range is equipped with a live fire sniper tower and an automated target system. Maximum range is 850m.

STATUS: Active
LOCATION: 79607280
No. Firing Pts: 20 stationary on firing line, 12 in maneuver

RANGE USES:
Primary Use: Static unknown distance live-fire.
Alternate Uses: Sniper/Fire and maneuver.







WEAPONS ACCOMMODATED: Detailed list is maintained in the Range Facility Management Support System (RFMSS).

- Pistol
- Shotgun
- Service Rifles
- Automatic Rifles
- Sniper Rifles
- 40mm Grenade Launchers, Handheld
- Light and Medium Machine-guns
- Approved foreign weapons
- AT-4 Trainer
- SMAW Trainer
- M72 LAAW Trainer
- Practice Grenades
- Pyrotechnics/Simulators
- 60mm mortars

AMMUNITION AUTHORIZED: Detailed list is maintained in the Range Facility Management Support System (RFMSS).

- Pistol (all)
- Shotgun (All)
- 5.56mm (All)
- 40mm Handheld, Illum/Practice
- 7.62mm X 51mm Ball/link
- 7.62mm X 51mm Special Ball (.308)
- 7.62mm X 67mm (.300 WinMag)

- AT-4 9mm
- SMAW 9mm
- M72 LAAW Trainer
- Grenade illum/practice
- 1/4LB TNT/Artillery simulators
- Smoke/Pyrotechnics
- 60mm mortars (Illumination and TP only)

TARGETS/SIMULATORS/DEVICES.

- 60 Stationary Infantry Targets (SITS) and 8 Moving Infantry Targets (MITS) with SACON/earth protective walls out to a max range of 850m.
- 7 Training IED and Simulator bunkers with SACON protective walls.
- Portable Infantry Targets (PITS), Training IED's, simulators, etc. are approved for this range.
- All targets and systems above must be coordinated through the Training Systems Support Desk (TSSD).
- Additional targets are limited to paper, wood, plastic and approved ballistic steel reactive targets (SRT).
- OIC/RSO must ensure all targets are placed and engaged to ensure rounds do not exceed the left and right lateral limits.
- Steel reactive targets (SRTs) must be a minimum of 3/8" and constructed of AR-500 or greater steel.
- EPR ammunition (M855A1/M80A1) is NOT authorized to be fired on SRTs or steel protective plates for Portable Infantry Targets (PITS).
- Ballistic steel targets will not be placed within 20' to the side or 20' behind target bunkers (see steel target placement diagram).
- Steel targets will not be engaged closer than 100m with 5.56mm or 7.62mm for targets provided by unit, 150m for TSSD provided SRT.
- Contact Training Support Center (TSC) at (703)432-7026/7969 for targetry support or questions.

- Trackless Mobile Infantry Targets (TMITs) are not approved on this range.
- All new events must be coordinated with the Installation Range Safety Officer (IRSO) no less than 30 days prior to any new event.

Minimum engagement distances for SRT:

- Pistol: 7 meters
- Shotgun (buck/bird): 10 meters
- Shotgun (slug): 50 meters
- 5.56mm/.223 Ball/link: 150 meters for TSSD targets
100 meters for unit-owned targets
- 7.62mm Ball/linked: 150 meters for TSSD targets
100 meters for unit-owned targets
- 7.62mm Special Ball: 150 meters
- .300 WinMag Ball: 300 meters

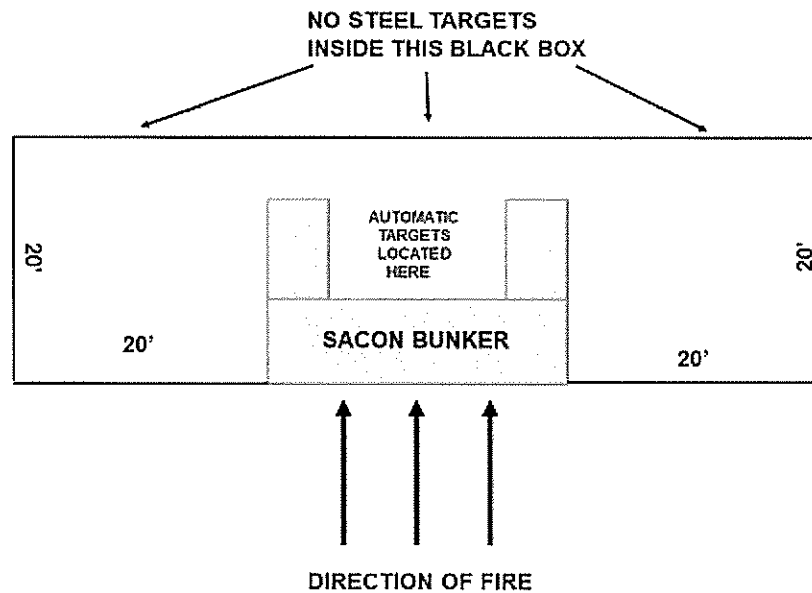
- Approved foreign weapons ammunition
 - Pistol: 7 meters
 - 5.45mm: 150 meters for TSC targets

	100 meters for unit-owned targets
-7.62mm Ball and linked:	150 meters for TSC targets
	100 meters for unit-owned targets
-7.62mm x 54R:	150 meters for TSC targets
	100 meters for unit-owned targets

PRIMARY DIRECTION OF FIRE: Firing line - South East
Enveloping force - South East

RANGE USE RESTRICTIONS/COMMENTS

1. All range regulations (MCBO 3570.1B) and the Range 11 SOP must be adhered to.
2. The only weapons and ammunition approved for use on this range are listed in this certification and SOP. There shall be no deviation from or modification to the approved weapons and ammunition.
3. The Officer-in-Charge (OIC) shall be the rank of Staff Sergeant or above and will be certified in accordance with MCB Range Regulations. The Range Safety Officer (RSO) shall be the rank of Sergeant or above and will be qualified in accordance with MCBQ Range Regulations (MCBO 3570.1_) and MCO 3570.1C. The OIC and RSO must both be present during all live-fire.
4. Ensure range flags are posted, ear protection is worn (eye protection for steel), safety brief is given, Range Control contacted and all fires are directed between the left and right lateral limits markers (black and white striped).
5. All brass, trash, targetry and materials will be removed completely at the end of training by the using unit. This includes any materials used to place targets on. A Range Control Patrolman will conduct the post inspection for the range.
6. When SRTs are used, they will be positioned in accordance with the steel target guidance portion of the range SOP. They will be positioned as to not allow "splash" or fragmentation of projectiles to impact the target mechanisms behind the SACON protective walls.



7. Automatic fire (6-9 round bursts) is authorized.

8. Firing on the move is authorized in accordance with the following procedures:

- Movement will be restricted to walking straight forward, to the rear and simple button-hook techniques.

- All shots will be directed straight downrange.

- There will be no more than two shooters per instructor/safety supervisor moving at a time. (Example: 7 shooters = 4 instructor/safety supervisors).

- There will be at least one target width/3 meters separation between shooters.

- Targets fired upon will be no farther than 50m.

- No steel targets will be engaged with rifles while firing on the move. If engaging steel targets on the move with pistol or shotgun, there will be no more than one (1) shooter and (1) instructor/safety supervisor moving downrange at a time.

- Individual shooters will fire at no more than two targets at a time while firing on the move (oriented straight downrange).

- Semi-auto/single shots only.

9. Glass targets (Snipers) are authorized with the following restrictions:

- a. All glass fragments/spalling will be completely removed from the range upon completion of training. This can be done by utilizing drop cloths/sheets.

- b. For angled glass shots, the target will be positioned so that the gun-target line (the shot) is oriented straight down range.

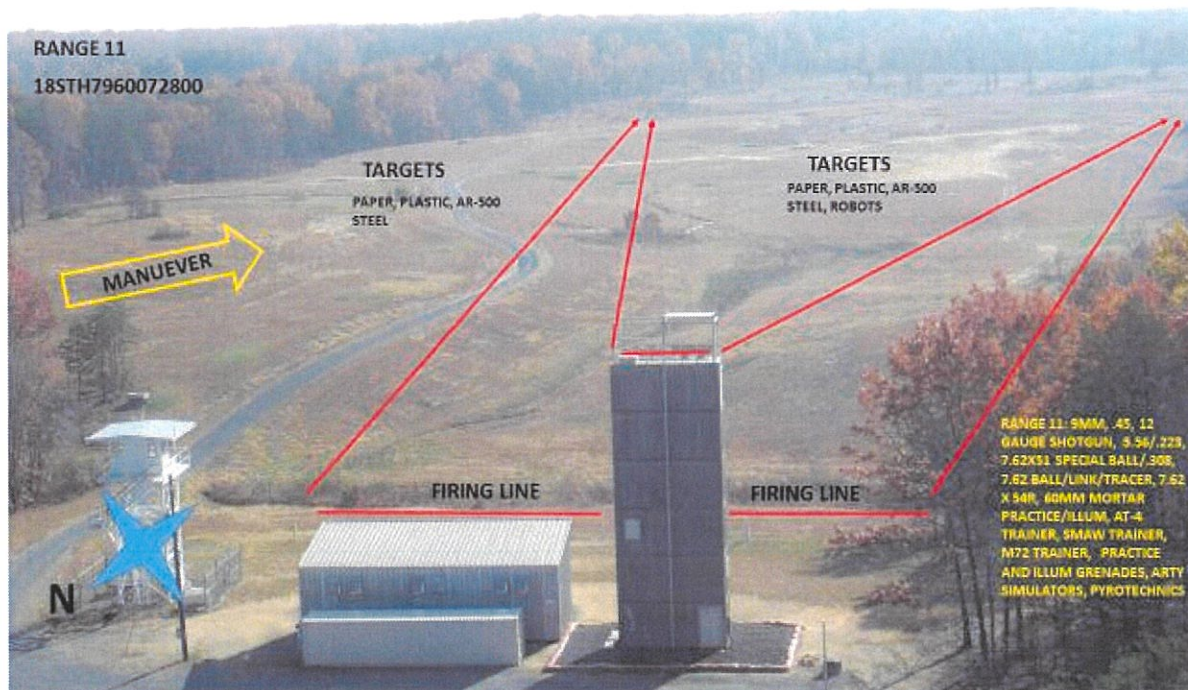
c. Glass will not be fired at less than 100 yds.

10. HERO sensitive munitions are commonly used on this range. It is the OIC/RSO responsibility to understand all capabilities and limitations of their munitions.

11. When base of fire (BOF) is used, it will set up at grid 7974072760. Base of fire will cease fire when enveloping force begins fire and movement. Target operators will ensure BOF targets cease operation at that time.

12. Enveloping force must turn and orient fire downrange between main left and right lateral limit signs once target engagement in range center is complete. Target controller will ensure targets are exposed in an order to channelize live fire in this direction.

13. Enveloping force can consolidate on far road between left and right lateral limit signs oriented downrange awaiting counterattack. **This is the limit of advance for live-fire forward movement.**



14. Crossfire is not authorized on this range. Shooters must be briefed that no one will fire across the frontage of the range, increasing the SDZ footprint. Situational awareness will be exercised at all times by all personnel on the range.

15. Artillery simulators are authorized for use on this range. Great care and situational awareness will be exercised while utilizing them.

16. Firing from the sniper tower cannot be conducted with individuals on the firing line.

17. Climbing on or rappelling from the towers is not authorized.

18. Mortars will only be fired from the left side of the range in the vicinity of the maneuver element area (grids: 18STH7997972753, 18STH8001772725, 18STH8004972700, 18STH8008572675). Illumination and training practice are the only mortars to be fired on this range. They will only be fired into the target boxes on the far end of the range. **Full range practice mortars will only be retrieved by EOD.**

60mm Full Range Practice Mortars Target Boxes



19. Mortars will not be fired over the heads of troops.

20. Overhead fire (direct fire) is allowed on Range 11. Overhead fire precautions are addressed in the DA-PAM 385-63. Some specifics are:

- Only ammunition cleared for overhead fire will be used.
- Weapons will be fired from a stationary position only.
- Weapons will only be ground or vehicle-mounted, will utilize tripods with T & E devices and will use positive stops to prevent crossfires and depression of the muzzle.
- Weapons will be test-fired on targets prior to the live-fire event to ensure accuracy and to test effectiveness of traverse and depression stops. Once test-fired, the weapons/vehicles will not be moved until all firing is complete.
- All other precautions for overhead fire in DA-PAM 385-63 will be strictly adhered to.

21. Units that do not occupy their range within two hours of their scheduled occupy time will lose the use of that range for that day.

22. Units that have requested contractor support (PITS targets, Training IED's, simulators, etc.) are required to contact a Government representative (TECOM Systems Support Officer (SSO) or Fire Desk) if the unit will not be present on the specified range within 1 hour of the approved time in RFMSS.

23. Units that have occupied a range with approved contractor support (PITS targets, Training IED's, simulators, etc.) and that have not begun to use that support within 2 hours of the approved time in RFMSS will forfeit all contracted support for the day.

24. Units that are training with contractor support (PITS targets, Training IED's, simulators, etc.) that place themselves into a voluntary check fire for 2 hours or more during the approved support hours will forfeit remaining support for the day.

NOTE: Units that encounter situations where contractor support (PITS targets, Training IED's, simulators, etc.) is delayed or interrupted by circumstances beyond the control of the requesting unit (RMB directed check fire, ASP support, MEDEVAC, etc.) must contact a Government representative (SSO or Fire Desk) in order to arrange continued support within the scope of the contract and available assets.

25. If Training IED's or simulators, are to be used in this facility, qualified personnel trained on the systems must be present.

26. Range 15 (Series) cannot be used while Range 11 is conducting enveloping attacks.

27. When firing .300 Win Mag MK248, Distance Y will be used IAW SOUM 3-18.

FACILITIES (Number of each):

Towers: 2

Sheds: 1

Ammo Breakdown: 1

Parking: YES

Head facility: Porta-Johns

Description of other structures: covered bleachers, old head, battery recharging station

UTILITIES AVAILABLE:

Electricity: Yes
Lights: Yes
Water System: None

INSTALLED COMMUNICATIONS: Telephone

MEASURED DISTANCES:	<u>MILES</u>	<u>MGRS</u>
TBS	8.5	87106390
ASP:	13.1	91256605
WTBN:	9.6	87906780
EMT/Fire (Fire House 3):	10.6	89606410
Camp Upshur:	4.5	80007860
Range Control:	9.0	87426350
Mainside Gate	13.5	94406440
Nearest MEDEVAC LZ	0.1	79607290 (LZ Cardinal)

Directions to MEDEVAC LZ: Located in open area behind the Sniper tower.

LASERS AUTH: Class 1 - 3R. Standard aiming devices mounted on approved service rifles. Class 3B can be fired if safety filter is on, reducing power output.

AVAILABLE DAYS/HOURS: 362/All

AREA SUITABILITY:

<u>Unit Type</u>	<u>Unit Size</u>	<u>No. of Units</u>
Combat arms	Company	1
	Platoon	1
	Squad	2

GEOGRAPHICAL DATA:

Access Routes	Dirt 5 from MCB-8 or Dirt 5 from MCB-6
Soil Type	Dirt/rock
Terrain Type	Small rolling hills
Vegetation	Grass/woodland

COMMUNICATION REQUIREMENTS:

1. A radio check is required immediately upon occupying any portion of the RTA, every 30 minutes in a live fire status and every 3 hours in a non-live fire status.
2. The Range Control Facility (RCF) Fire Desk Net Control call sign is "Range Control". Your call sign is "RANGE 11".
3. The primary RCF Fire Desk Net Control frequencies are: ELMR talk group "RC Safety" (ground) and 323.7 AM UHF (air).

4. The secondary RCF Fire Desk Net Control is telephone, numbers: 703-784-5321 or 5322.
5. OIC/RSO will monitor the RCF primary and secondary Safety Nets at all times. Instant communication is required.
6. Any unit with organic ELMR radios will have their ELMR radios programed with the "RC Safety" talk group and use those radios as their primary means of communication within the RTA.
7. Units without organic ELMR assets will be issued ELMR radios from RMB upon check-in.
8. Approved Non-ELMR radios are only authorized for internal communication (ground).
9. If the RCF cannot reach a unit within the RTA via primary communication, the unit will be contacted via the secondary means of communication.
10. Upon loss of primary communication the OIC/RSO will initiate a "check fire"/cease training status and will contact the RCF via secondary communication. This communication will be maintained while primary communication is being restored. Units may only resume firing/training once primary communication has been re-established and clearance is granted by the RCF.

INJURY CLASSIFICATIONS:

Injuries are classified into the following categories in order to aid in casualty evacuation from the RTA.

1. ROUTINE. Routine injuries are those injuries that are not threatening to life, limb or eyesight; and conditions or illnesses treatable by medication or procedures available at the base medical facilities.
2. PRIORITY. Priority injuries are those injuries that require immediate medical attention but are not threatening to life, limb, or eyesight if treated promptly.
3. URGENT. Urgent injuries are severe injuries that are threatening to life, limb, or eyesight and require immediate medical attention.
4. MASS CASUALTY. A mass casualty is a series of injuries with multiple priority and urgent medical patients.

MEDICAL EVACUATION (MEDEVAC) PROCEDURES:

1. Injury occurs.
2. Range immediately cease-fires.
3. Medical support evaluates/treats injured personnel.
4. Range OIC/RSO notifies the RCF of the injury, is the victim conscious/unconscious and what type of MEDEVAC transportation is requested (ground/air).
5. The OIC/RSO must maintain constant radio contact with Range Control and awaits further instructions.

A handwritten signature in red ink, appearing to read "J. M. Suber", is written over a horizontal line.

Installation Range Safety Officer

29 November 2022